

Excellence in tree and timber assessments.

Resistograph7

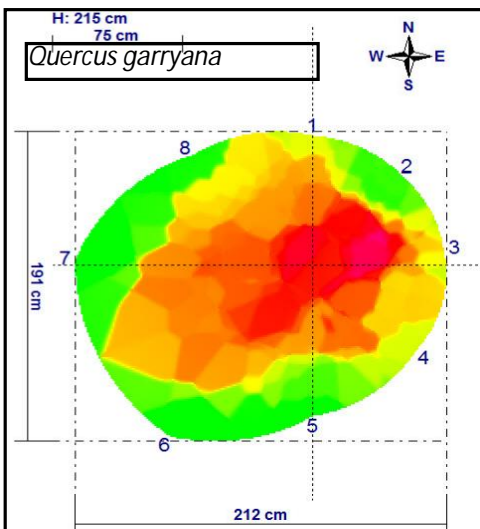
The Series 650 Resistograph7 Lightweight, fast, sophisticated, easy to use, the 650 Resistograph provides incredibly detailed data allowing truly professional analysis for tree and timber testing. Used in combination with the Arbotom, and supplementary software applications, tree risk assessment professionals now have an unsurpassed array of specialized assessment tools available.



What's in a Word? Quite a lot.

The word Resistograph7 is a trademark of Rinntech and has been since Frank Rinn invented the machine in 1986. Only machines made by Rinntech are Resistographs7, and only Rinntech machines give Resistograph7 readings. Learn more at www.resistograph.com

Arbotom - Sonic Tomography



Check out the Arbotom sonic tomography equipment with options for root sensors, 3D tomography, and strength loss calculations.

Rinntech also offers software for mobile devices to evaluate:

- tree stability - ArboStApp™
- shell wall thickness - ArboRef™
- wind loading - ArWiLo™

To see the full range of Rinntech products go to <http://dunster.ca/rinntech/>
For more information contact Julian Dunster. North American Distributor for Rinntech.
jd@dunster.ca 778 433 8465