

Assessment of Tree Forks Workshop

by Duncan Slater – PhD – Myerscough College · UK

See: <https://www.linkedin.com/in/duncan-slater-0a135634/>

Date: Wednesday, September 19, 2018

Venue: Meadowbrook Golf and Country Club, 11939 Warden Ave, Gormley, ON

See: for directions

<https://www.google.ca/maps/place/Meadowbrook+Golf+Club/@43.9082242,-79.4405879,11.75z/data=!4m5!3m4!1s0x0:0x1811f7d10a12dbfd!8m2!3d43.9378999!4d-79.3479998>

Time: 8:00AM to 5:00PM

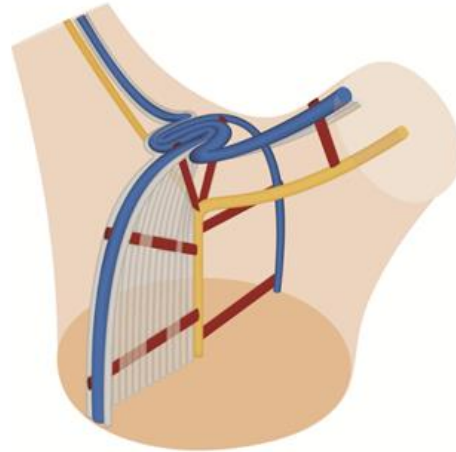
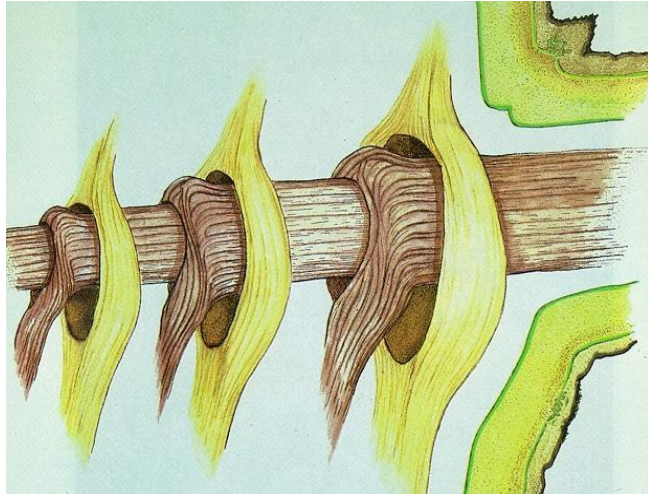
Where you taught that there are two types of branch unions, U-shaped and V-shaped? Were you taught that U-shaped are strong and V-shaped weak?

This simplistic approach ignores the huge variability that exists and can negatively affect pruning and retention decisions.

Do you know that “crossed and interfering” limbs are bad for trees and should be removed?

This overly simplified view has resulted in many trees losing branches after pruning as the supporting branches are removed.

You know the first image, but have you seen the second?



Recent published research conducted at Myerscough College and the University of Manchester has provided us with a clearer picture of the anatomy of junctions in trees. **Dr. Duncan Slater** will be leading an Assessment of Tree Forks Workshop, the first ever in Canada.

At the “Assessment of Tree Forks” workshop, Dr. Slater will provide guidance on how to assess branch unions for safety and likelihood of failure. He will also present his most recent research concerning the formation of bark-included junctions and how their relation to ‘natural braces’.

This one-day workshop will provide invaluable knowledge to anyone working with trees and making decisions on pruning, removals, risk and management as they relate to branch unions and strength.

Included with the workshop is *Assessment of Tree Forks: Assessment of Junctions for Risk Management* course notes published by the Arboricultural Association (trees.org.uk), a 59-page reference, lunch and beverages throughout the day. See: <https://www.trees.org.uk/Book-Shop/Products/Assessment-of-Tree-Forks-Course-Notes>