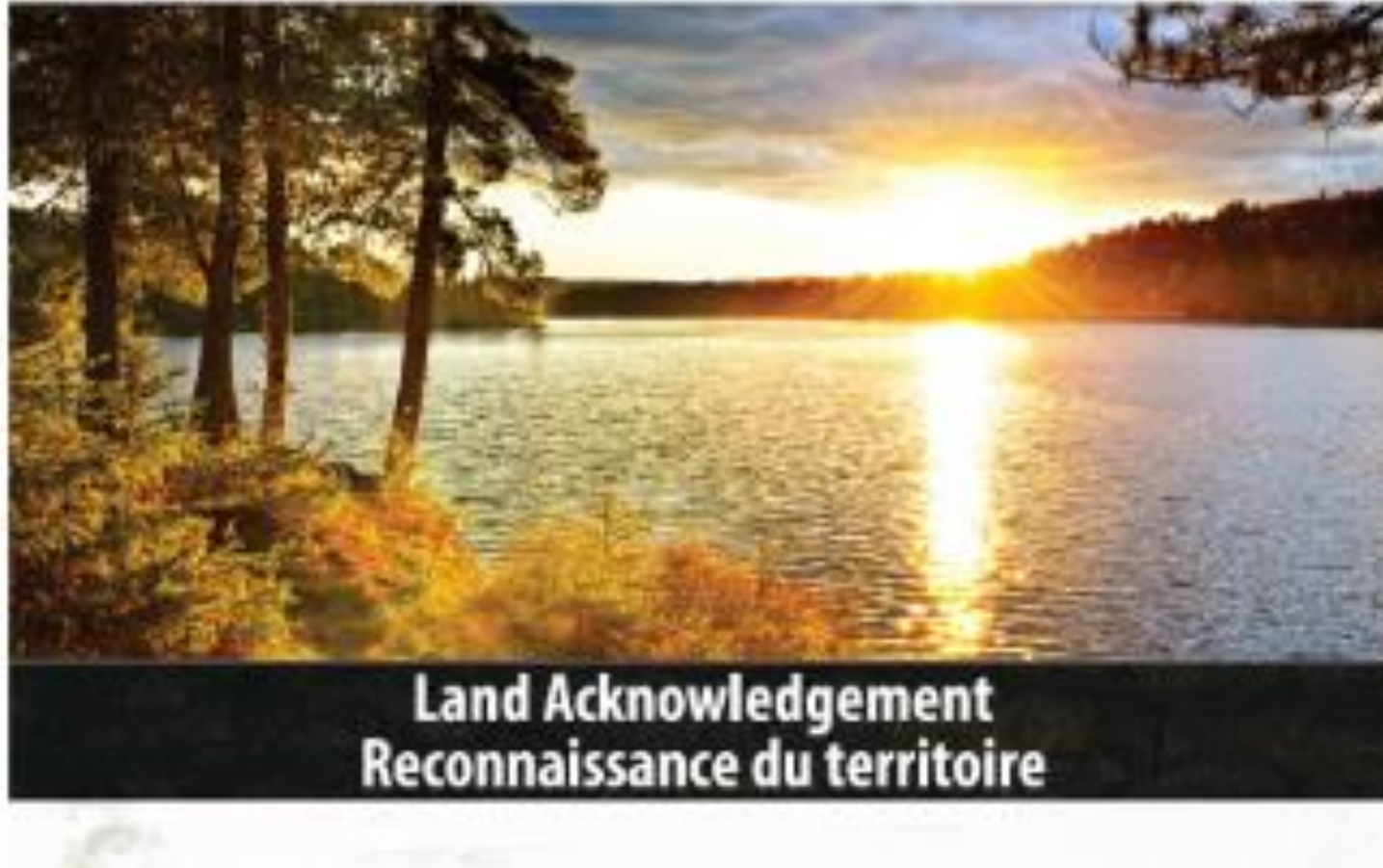


Adapting to Extreme Heat Workshop

Birgit Isernhagen and Martha Robinson
Healthy Environments, Ottawa Public Health
May 26, 2023



Land Recognition



Introductions

Facilitators

Birgit Isernhagen and Martha Robinson
Environmental Health Branch, Ottawa Public Health

Note takers

Christine Taylor and Grace Pierce
OPH Emergency Management; Healthy Supportive Environments; Ottawa Public Health

Tech. support

Emma Langham
Climate Change and Resiliency Unit, City of Ottawa

Opening remarks

Emily Morrison, Program Manager
Ottawa Public Health, Environmental Health Branch

Closing remarks

(and time keeper)

Julia Robinson, Section Manager
Climate Change and Resiliency Unit, City of Ottawa



Welcome

- Climate change and **health** vulnerability and adaptation assessment
- Heat vulnerabilities where people live
- Workshop objectives
 - Verify who is at highest risk from extreme heat
 - ID adaptive strategies being used and their effectiveness
 - Find climate adaptation gaps and opportunities to help residents be resilient to hot weather in the future
- Working together is a way to increase resiliency

Workshop Agenda

- Presentation (20 min)
- Ottawa extreme heat health assessment
 - Who is vulnerable to extreme heat (20 min)
 - Break (5 min)
 - Existing Adaptation Strategies and Gaps / Opportunities (40 min)
- Closing remarks (5 min)



June heat wave in B.C. was deadliest weather event in Canadian history

FRANCES BULA >

VANCOUVER

SPECIAL TO THE GLOBE AND MAIL

PUBLISHED 20 HOURS

Deaths Spike as Heat Wave Broils Canada and the Pacific Northwest

OTTAWA CITIZEN

News / Local News

Records broken in Ottawa as heat wave continues

Staff Reporter

Aug 22, 2021 • August 22, 2021 • 1 minute read • [Join the conversation](#)



Manitoba

Heat dome continues to bake Prairie provinces as record temperatures expected

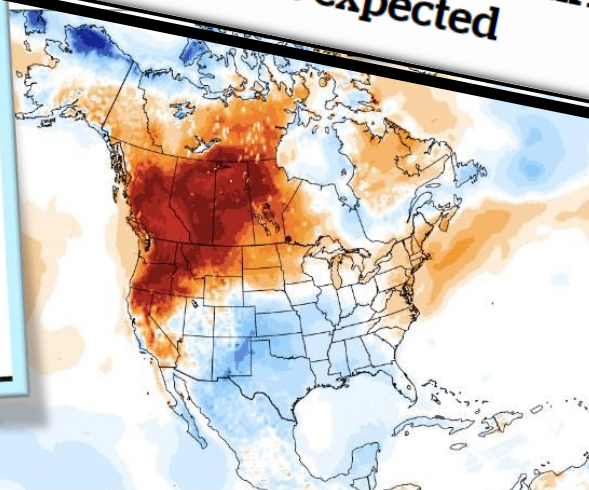
British Columbia

B.C. town sets another all-time temperature record as 'prolonged, dangerous' heat wave continues

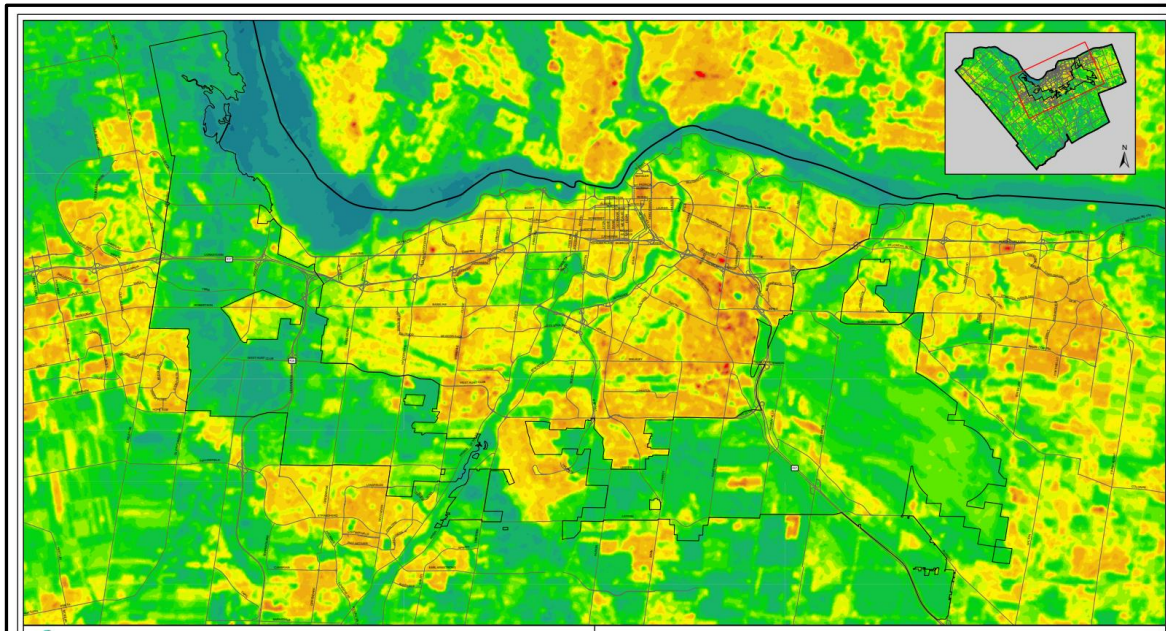


High temperatures could extend into next week, Environment Canada warns

CBC News - Posted: Jun 28, 2021 6:32 AM PT | Last Updated: June 29



Climate change driving increasing # of extreme heat events in Ottawa



Year	# of Heat Warnings Issued by ECCC	# of Heat Warnings longer than 2 days	Total # heat warning days
2016	5	1	13
2017	2	0	7
2018	3	1	10
2019	3	1	11
2020	7	2	21
2021	6	3	19
2022	2	0	4

Temperature in Ottawa by 2050



3.2 °C
warmer on
average



4 times
more days
over 30 °C



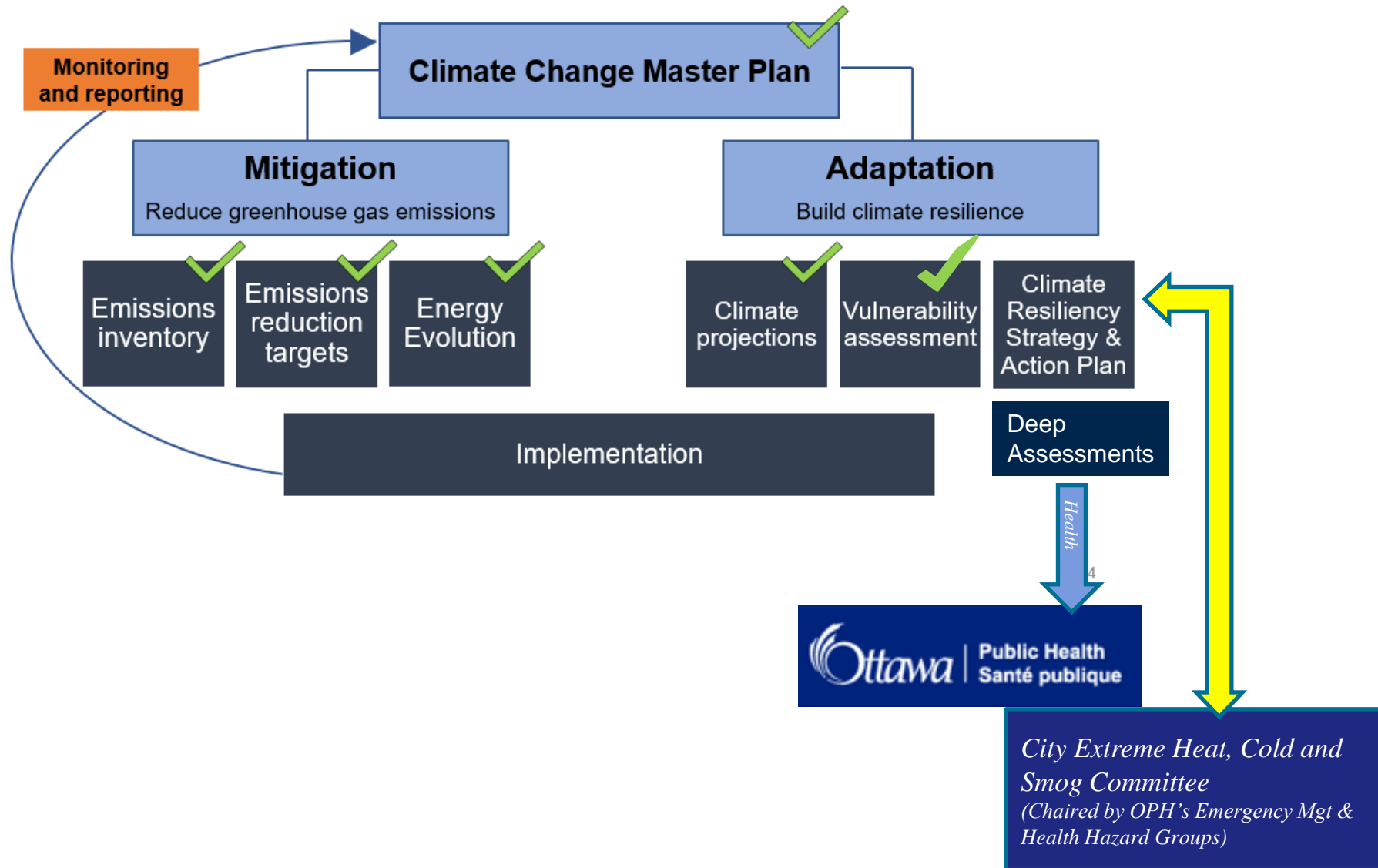
35%
fewer days
below -10 °C

Winter
5 weeks
shorter



33% more
freeze-thaw
events in
winter

Where we are at in Climate Change Planning



OPH Climate Change & Health Vulnerability Assessment & Adaptation

- Required by the Ontario Public Health Standards
- Risk assessment of climate change and health vulnerabilities including extreme heat
 - Reviewed by Subject Matter Experts
 - Today we're seeking community input
 - Will inform the City of Ottawa's Climate Resiliency Strategy

Resiliency is needed, adaptations are key

2021 OPH Climate Change Vulnerability Assessment on Extreme Heat

- Daily exposure scenarios for Ottawa to extreme heat
- Based on Social Determinants of Health
 - People with lower income have higher rates of chronic diseases, disabilities, substance abuse, social and health inequities, and cultural and language barriers.
- Who has good vs poor access to AC environments
- Compared existing to future vulnerabilities under climate change using climate projections for Ottawa
- In all cases the future risks were magnifications of existing risks – this may not be true as social policies could lessen the future risks

Findings

Very high and high risk from exposures to extreme heat:

- Housing – rental accommodations, rooming houses, and migrant farmer worker accommodation with no supervision or care
- Outdoor leisure activities – passive mass event
- Occupation – outdoor workers

Risk (L x C)	
1 to 4	Low
5 to 9	Medium
10 to 14	Medium-high
15 to 19	High
20 to 25	Very high

EXPOSURES	Risk Value			
	Access to Cooling		Extreme Heat in 2050	
	Good	Poor	Good	Poor
HOUSING (time in housing type defined)				
Rental accommodations, rooming houses, and migrant farmer worker accommodations (12hr/d) with no supervision or care	4	9	6	20
OUTDOOR LEISURE ACTIVITIES (variable time frames)				
Physically Active (e.g. race, jog, hiking, biking, team sports)	6	9	9	12
Passive Mass Event as Spectator (e.g. concert, parks, Canada Day)	6	9	12	16
OCCUPATION (8h/d)				
Outdoor worker (e.g. farmer, construction worker, landscaper, food vendor, roofer)*	3	12	4	20

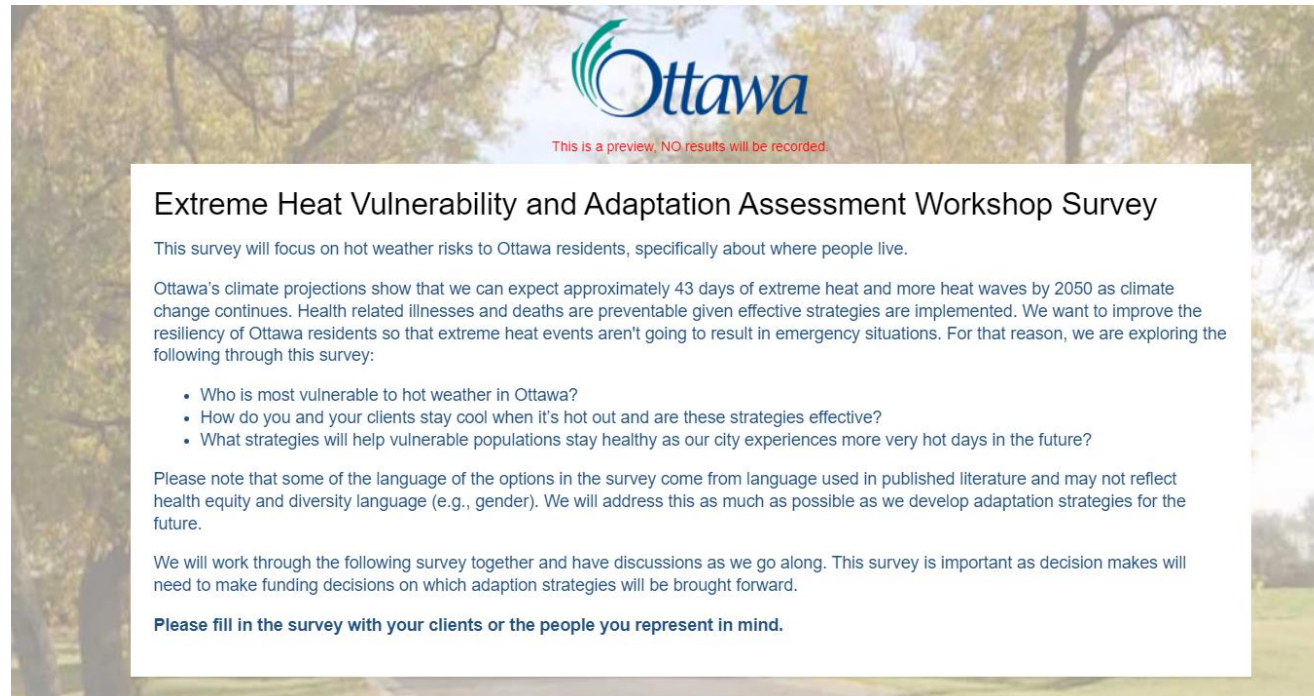
Housing Exposure Heat Risks

Next is a survey with questions to help truth what we learned from the literature and best practices

- Who is most vulnerable to hot weather in Ottawa?
- How do you and your clients stay cool when it's hot out and are these strategies effective?
- What strategies will help vulnerable populations stay healthy as our city experiences more very hot days in the future?

Now we want to hear from you!

- Survey link being sent out in Zoom chat
- Wait for instructions



The image shows a screenshot of an email invitation for a survey. At the top, the Ottawa logo is displayed with the text "This is a preview. NO results will be recorded." below it. The main heading is "Extreme Heat Vulnerability and Adaptation Assessment Workshop Survey". The text explains that the survey will focus on hot weather risks to Ottawa residents, specifically about where people live. It mentions that Ottawa's climate projections show approximately 43 days of extreme heat and more heat waves by 2050, and that health-related illnesses and deaths are preventable with effective strategies. The survey aims to improve the resiliency of Ottawa residents by exploring emergency situations. The survey questions listed are:

- Who is most vulnerable to hot weather in Ottawa?
- How do you and your clients stay cool when it's hot out and are these strategies effective?
- What strategies will help vulnerable populations stay healthy as our city experiences more very hot days in the future?


Please note that some of the language of the options in the survey come from language used in published literature and may not reflect health equity and diversity language (e.g., gender). We will address this as much as possible as we develop adaptation strategies for the future.

We will work through the following survey together and have discussions as we go along. This survey is important as decision makers will need to make funding decisions on which adaptation strategies will be brought forward.

Please fill in the survey with your clients or the people you represent in mind.

Break

05:00

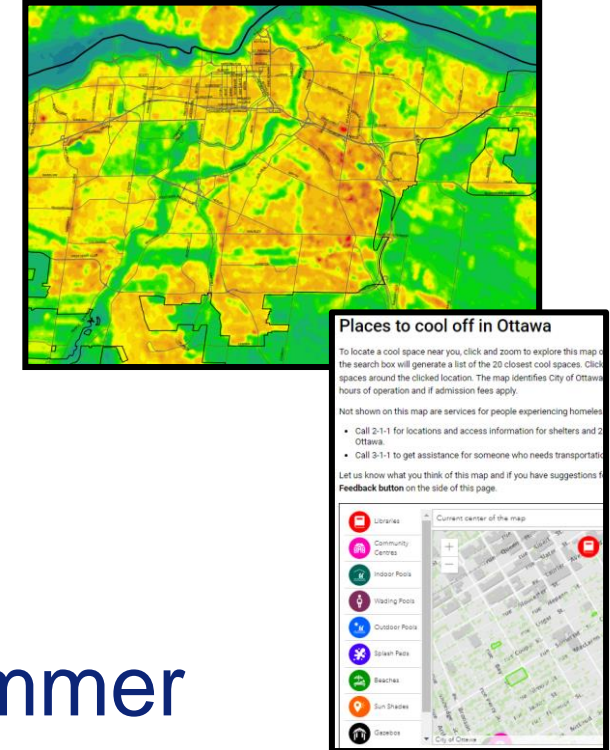
mins: secs: type:
 

 Breaktime for PowerPoint by Flow Simulation Ltd.

Pin controls when stopped

Resiliency is Needed Adaptations are Key

- Next steps
 - Climate Resiliency Strategy Report
 - Board of Health Report
 - Implementation of adaptation measures
- Many cross-over impacts with heat
- Now is the time to start planning for summer
- Think about the strategies we talked about
- Develop an Extreme Heat Adaptation Plan



Contact Information

Ottawa Public Health

Climate Change

Birgit Isernhagen

Birgit.Isernhagen@Ottawa.ca

Extreme Heat

Michelle Goulet (Martha is retiring)

Michelle.Goulet@ottawa.ca

City of Ottawa

Climate Resiliency Strategy

Julia Robinson

Julia.Robinson@ottawa.ca



(Arcadio Esquivel)